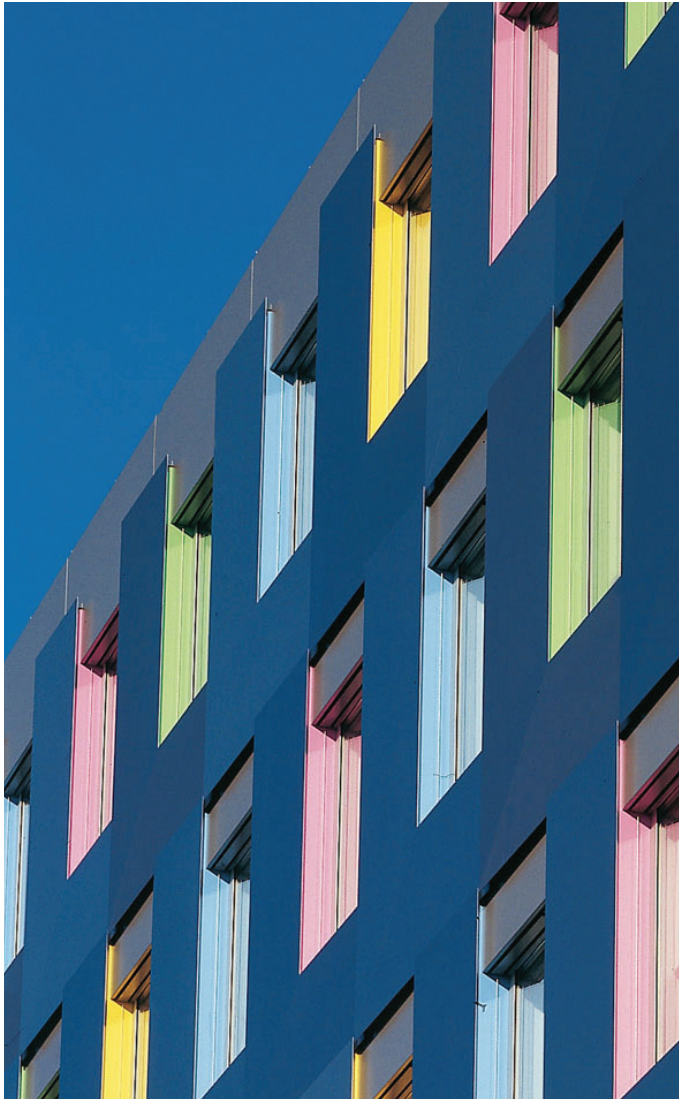
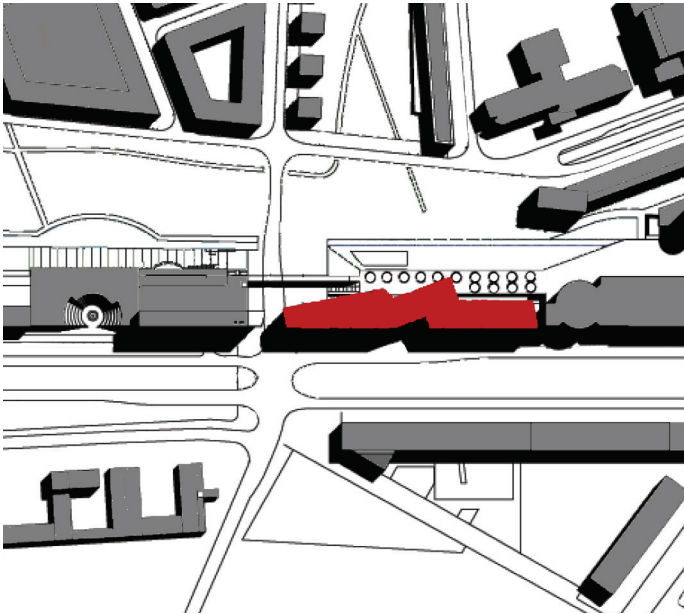


REGIONAL HEADQUARTERS
OF A BANK, KARLSRUHE

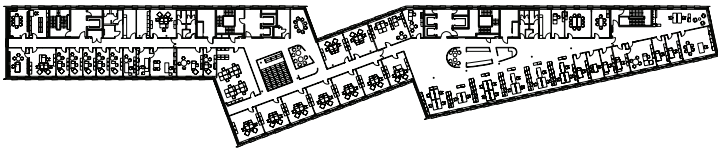


Office and Administration Buildings



Regional Headquarters of a Bank, Karlsruhe, New Building
Planning period 2004 Construction period 2005-2007 Location Ludwig-
Erhard-Allee 4, 76131 Karlsruhe GFA ca. 22.277 m² Scope 1-8 Client LBBW
Immobilien Management GmbH Costs 28,7 Mio €

Ground Plan of an upper floor



Regional Headquarters of a Bank

The building of the state bank of Baden-Württemberg (LBBW) in Karlsruhe is a future looking office development which provides a workplace for 550 employees in the centre of the city. The building is divided into three horizontal layers: A plinth, a washer and the office block. The plinth, with the main building entrance at street level, orientates the complex to the north, acting as a dynamic sculptural object which focuses the direction of the urban planning. The washer in the centre connects upper and lower layers to the office block on top, which looms above the street and gives the scheme an unusual vitality. The entrance provides an access to the lifts and stairway which lead to either the second floor esplanade or the basement car park. The canteen cuts through the earth slope providing views across the park and affording the opportunity to sit on the outdoor terrace. Two major access cores, positioned to the north facade, connect the various floors. The position of these cores, combined with the building's grid, allow for an open and flexible office environment with views over the park to the south. Furthermore, each floor can be divided into eight separate units allowing for alternative uses of the building.