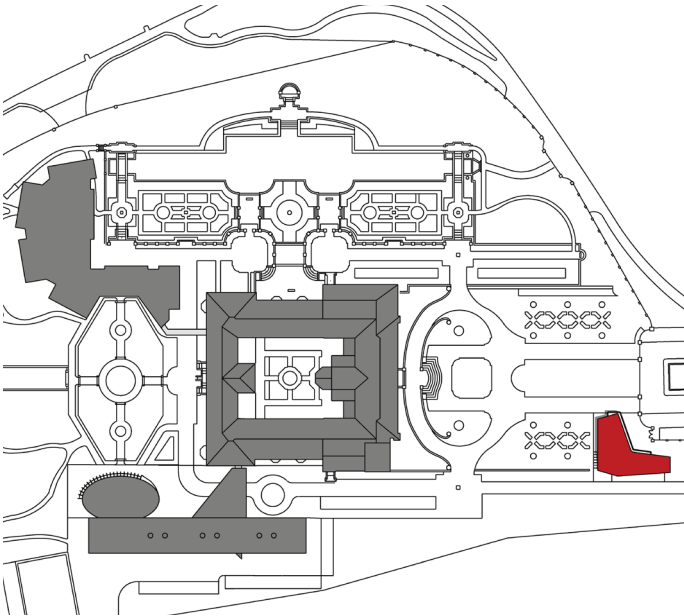
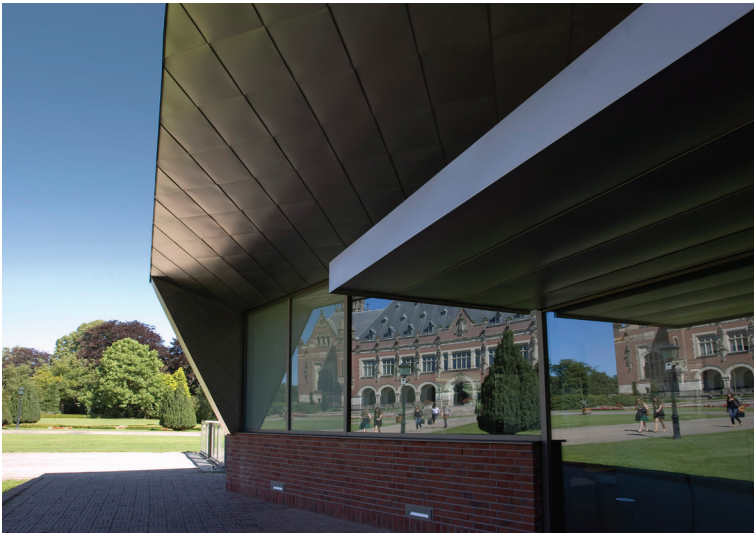


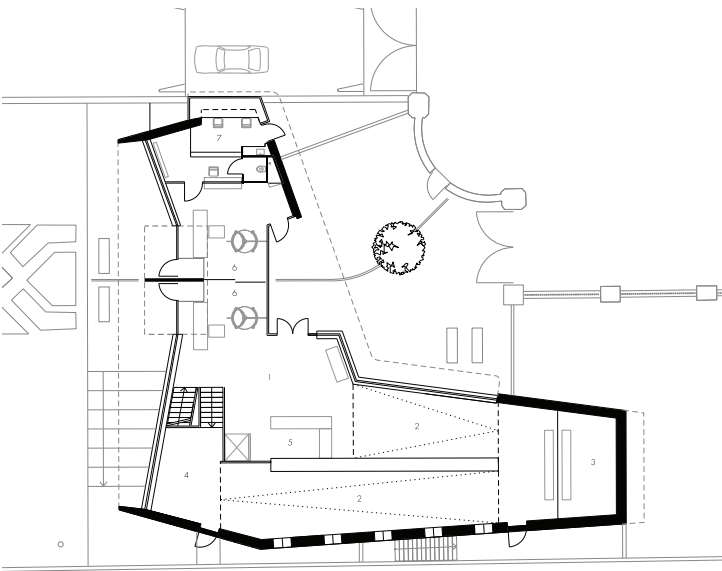
PEACE PALACE VISITOR  
CENTRE, THE HAGUE

Public and Government



Peace Palace Visitor Centre, The Hague, New Building  
Planning period 2010-2012 Construction period 2011-2012  
Location Carnegieplein 2, 2517KJ The Hague GFA ca. 500 m<sup>2</sup> Scope 2-5,  
Parts of 8 Client Carnegie Foundation Costs 1,7 Mio €

Ground Plan, ground floor



Peace Palace Visitor Centre

Taking inspiration from the material and form of the recently completed Library and Academy Hall (also by Wilford Schupp Architekten) the Visitor Centre serves two primary functions; firstly, it controls access of vehicles and pedestrians and secondly, it provides a historical introduction to the Peace Palace and the work of its Institutions. The Visitor Centre is the final part in a trilogy of new structures that use red brick and slate grey metal in respect of the historic listed status of the Palace. Terrace areas around the building echo the existing traditional paving materials and patterns, but while respecting the old, the Visitor Centre also creates an individual and contemporary identity for itself. It's 'L' shaped footprint sits in the narrow inclined space between the entrance wall and Southern tree boundary of the Carnegie Plein. Viewed through ornamental iron railings, its presence is gently announced by the softly curved titanium roof rising to the South and West. The exhibition sequence unfolds along a shallow ramp from the entrance hall around a central display wall to the observation level providing unobstructed views of the Peace Palace and gardens.