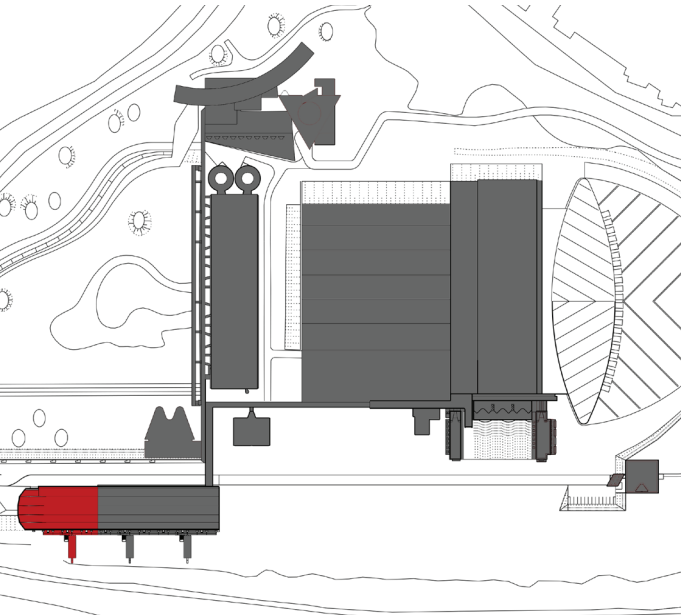
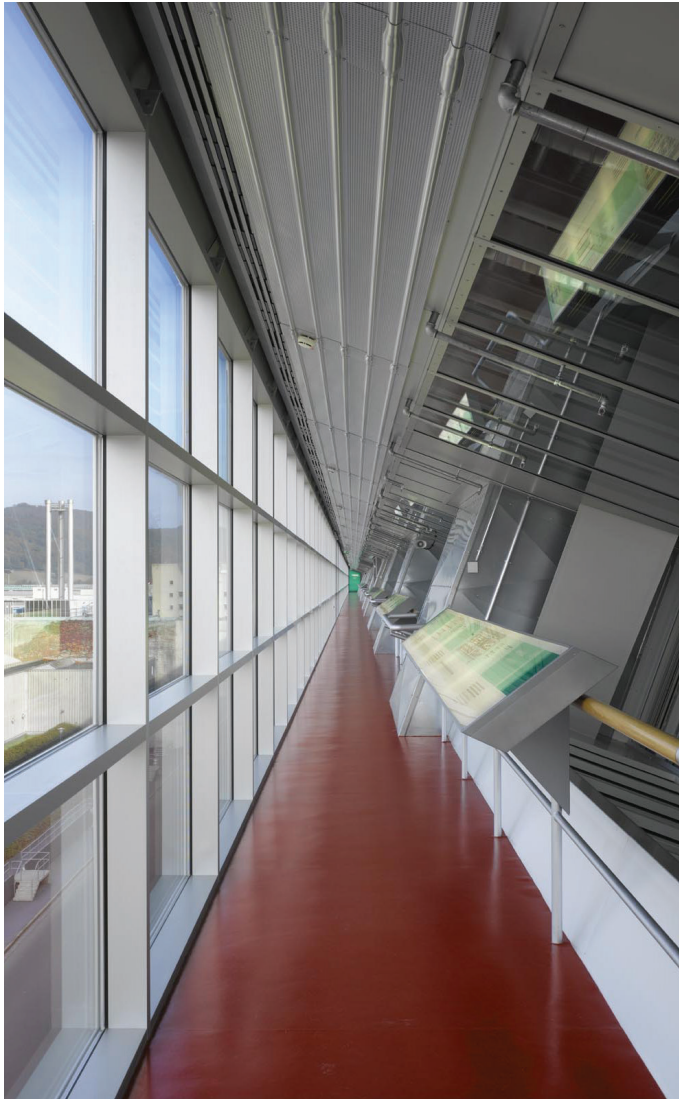


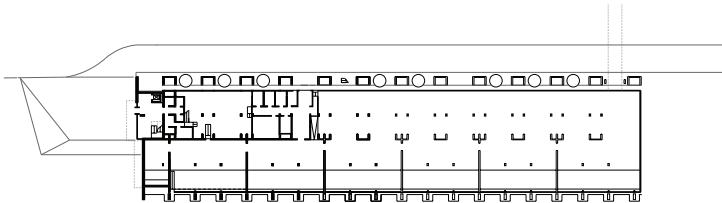
PRODUCTION
BUILDING EXTENSION
B. BRAUN, MELSUNGEN

Industrial

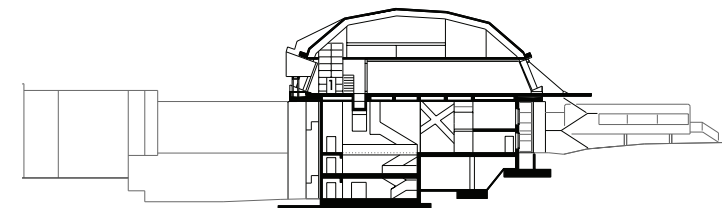


Production Building Extension B. Braun, Melsungen, Extension
Direct Commission Start of Planning 2007 Construction period 2007-2009
Location Pfieffewiesen, 34212 Melsungen GFA ca. 7.400 m² Scope 1-7,
Parts of 8 Client B. Braun Melsungen AG

Ground Plan, ground floor



Cross section



Production Building Extension B. Braun

When we consider how rapidly demand for medical products has increased since the 'City of Industry' at Melsungen was first conceived, designing a masterplan that could easily expand has proven to be a prudent strategy. Located in Pfieffewiesen, Hessen, the original cluster of buildings which made up the B. Braun campus was constructed at the end of the 20th Century. In 2007, the production building for infusion devices was extended, adding 50% of its original length. The extension features a 'layered' facade which demonstrates how the building is constructed from concrete, metal sheeting, and glass. To the South of the valley, in which the 'City of Industry' sits, is the elongated form of the Production Building, leaning against the hill slope like the spine of a body. To the North is the 'European Building', the navel of the complex, which houses B. Braun Headquarters. These two additions to the complex not only extended the 'spine' of the 'City of Industry' but also gave it a 'head'. A new visitor centre was also incorporated at the entrance of the campus and will serve to simplify and intensify dialogue between B. Braun, its target groups, and the visiting public.