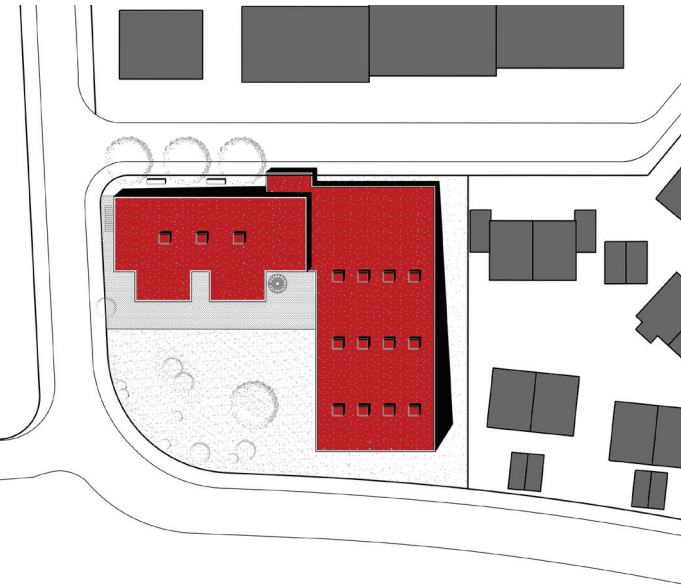
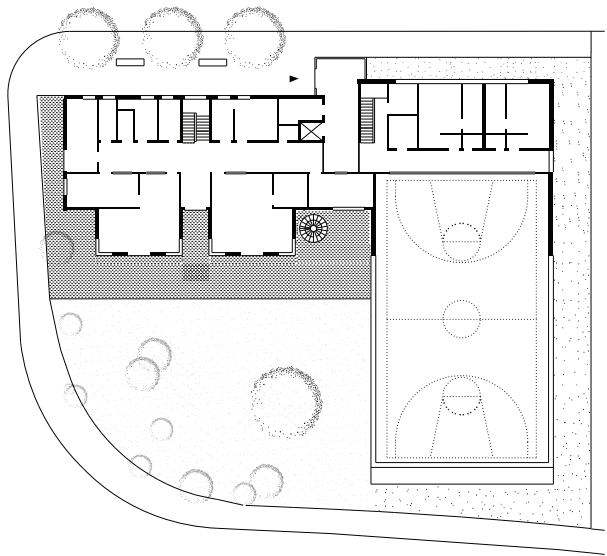


DAY-CARE CENTRE AND GYM  
HALL, ZAZENHAUSEN



Day-care Centre and Gym hall, Zazenhausen, New Building  
Competition 1<sup>st</sup> Prize 2007 Start of Planning 2007  
Construction period 2007-2010 Location Frundsbergstr. 27, 70437 Stuttgart  
GFA ca. 1.600 m<sup>2</sup> Scope 2-8 Client Stadt Stuttgart Costs 3,4 Mio €

Ground Plan, ground floor



Day-care Centre and Gym hall

We recently completed a new Childrens Day-care Centre and gym in Stuttgart-Zazenhausen. The building is set within a heterogeneous urban environment which includes sports facilities, a primary school, and residential housing. The height of the new building, which is primarily constructed of wood, relates to the scale of the surrounding context. The Day-care centre has a 'habitable' and 'group' room for each individual class which is in turn supported by a large common multifunctional room. The gym, though used occasionally by the Day-care centre, is primarily for external 'after hours' use by the neighbouring primary school and local sports clubs. The entire development is built around a central foyer and its arrangement is based upon the 'Einstein-Concept'. Group and lounge rooms, although traditionally combined, are flexible and available to use by everyone. The multicoloured wooden boarding which covers the external facade creates an enjoyable atmosphere of learning and playing in 'a wooden house for children'.