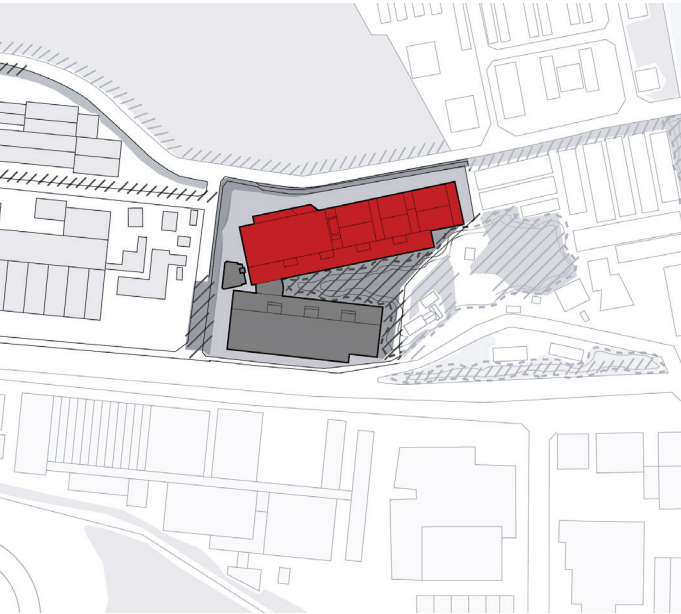
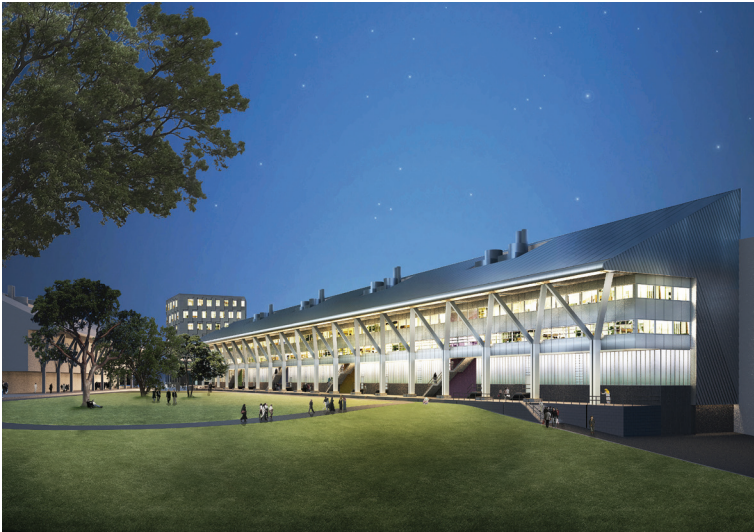


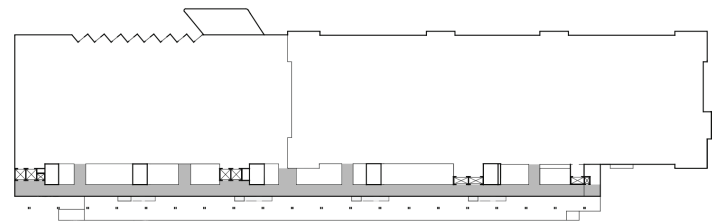
B. BRAUN PRODUCTION
BUILDING B3, PENANG,
MALAYSIA

Industrial



B. Braun Production Building B3, Penang, New Building
Start of Planning 2009 **Construction period** 2010-2012
Location Bayan Lepas Free Industrial Zone P.O.Box 880, 10810 Penang, Malaysia **GFA** ca. 12.000 m² **Scope** 1-5, Parts of 6 and 8 **Client** B.Braun Melsungen AG

Ground Plan, ground floor



B. Braun Production Building B3

B. Braun Melsungen AG's biggest subsidiary outside of Europe is located in Penang, Malaysia and has about 5.000 employees. Six buildings have already been constructed on the island, where medical technology products and surgical instruments are produced. Building in Asia imposes special challenges on German architects. The available space on the island is limited, resulting in the need of a very efficient use of floor space in new buildings. Stacking production areas has proven to be a viable option, although this increases requirements of the supporting structure and the technical supply of clean rooms. Because of Malaysia's proximity to the equator there are no seasons. The climate is constantly warm and humid. Buildings therefore need appropriate shading and roofing. Another requirement of the project was to include the corporate identity and principles of corporate architecture in the design of the building. At the same time local influences and culture should be incorporated in a comprehensive manner.