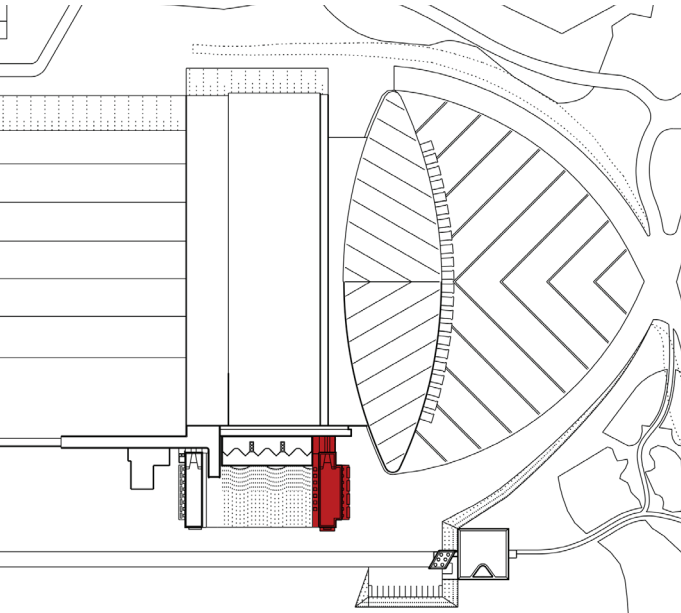


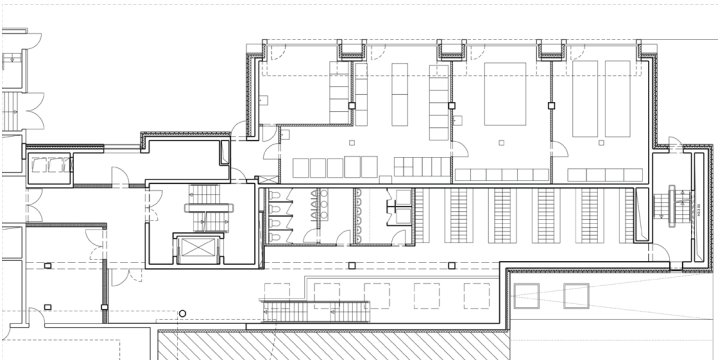
LOGISTICS HUB EXPANSION
B.BRAUN, MELSUNGEN

Office and Administration Buildings



Logistics Hub Expansion B.Braun, Melsungen, New Building
Start of Planning 2010 Construction period 2010-2012
Location Pfieffewiesen, 34212 Melsungen GFA ca. 3.460 m² Scope 1-5,
Teile von 6-7, 8 (Künstlerische Oberleitung) Client B.Braun Melsungen AG

Ground Plan, ground floor



Logistics Hub Expansion B.Braun

In 1992 B.Braun Melsungen AG began building a new flagship factory complex at Pfieffewiesen. The project provides facilities for production, logistics and administration, initially planned by James Stirling Michael Wilford and Associates in cooperation with Nægeli-Architekten in 1987. Since its initial completion the masterplan has continually expanded:

- In 1992 the High Rack Warehouse and Incoming Goods Department were extended
- In 2001 an innovative office building, the 'European Building' was completed
- In 2009 the extension of the production building and a visitor centre was commissioned
- In 2011 the parking garage was extended

In early 2012 buildings for the Work Council and Health Care Services, as well as the extension of the Administration and Logistics hubs were finished. The new mix of buildings contain work spaces, meeting areas, break rooms, storage, archives, facility management areas, changing rooms for 200 employees and a basement for maintenance vehicles.