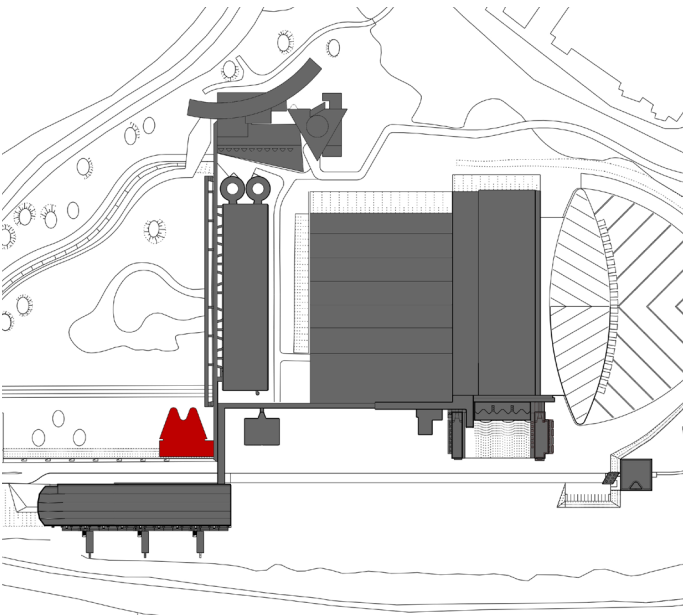
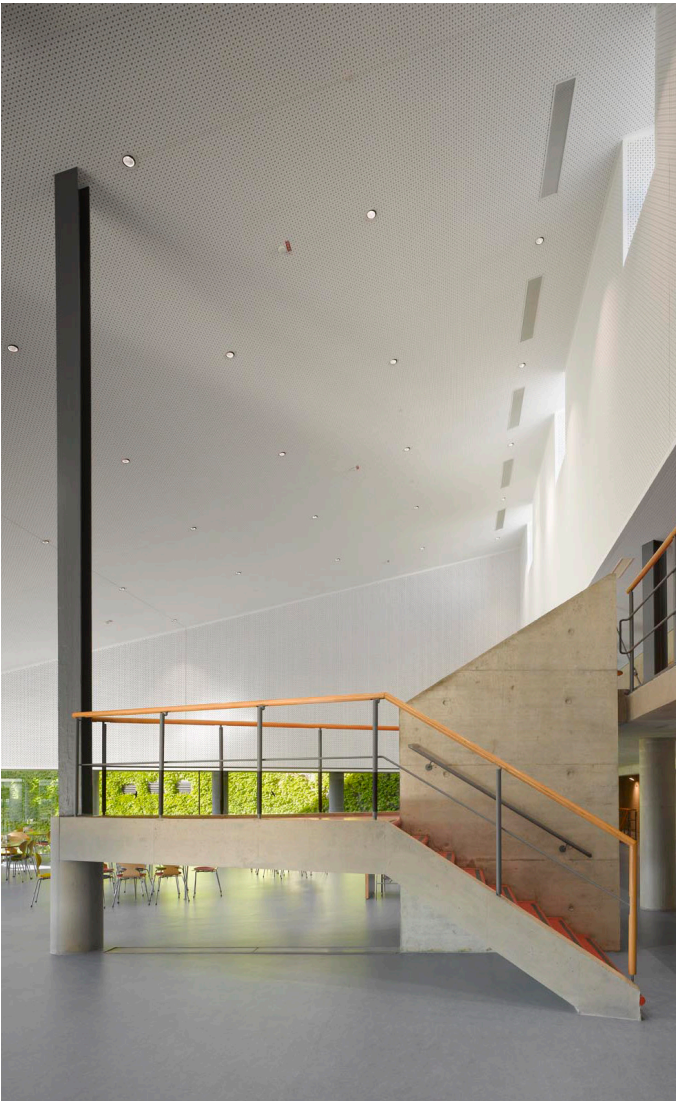
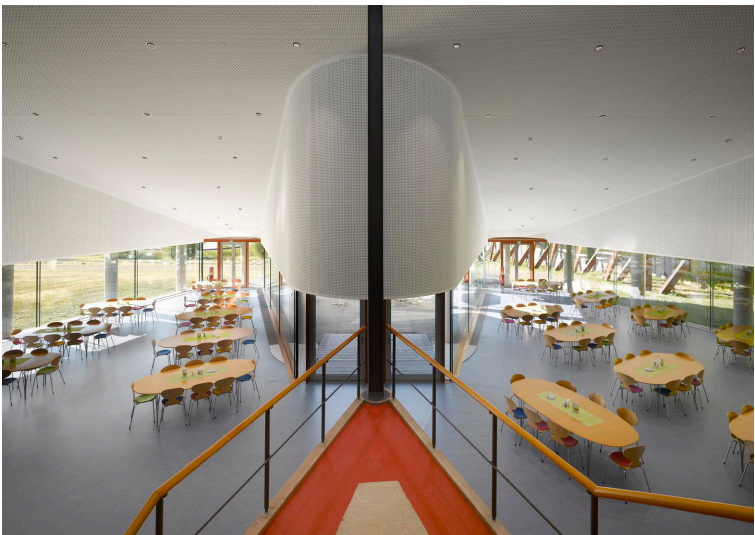
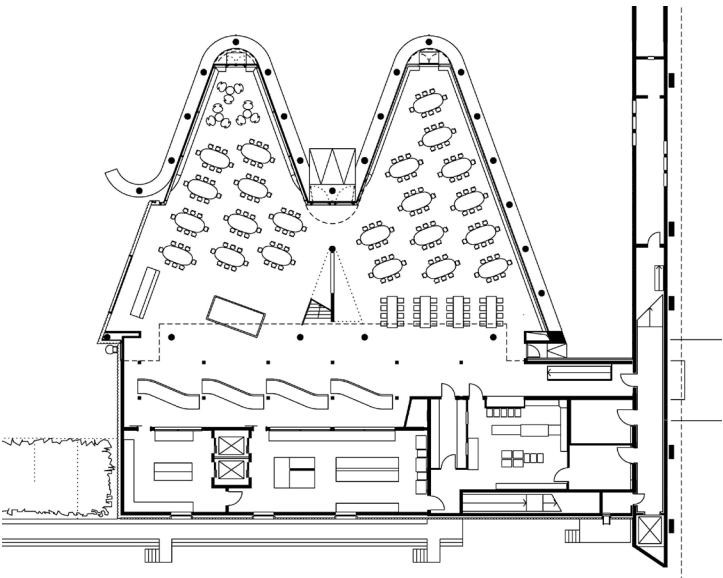


CANTEEN EXTENSION
B.BRAUN, MELSUNGEN



Canteen Extention B.Braun, Melsungen, Extension
Direct Commission Start of Planning 2010 Construction period 2011-2013
Location PfiEFFewiesen, 34212 Melsungen GFA ca. 1.310 m² Scope 2-5,
Parts of 6-8 Client B.Braun Melsungen AG

Ground Plan, ground floor



Canteen Extension B.Braun

Due to an increase in the number of employees at the “PfiEFFewiesen” plant in recent years an extension of the existing catering facilities was required. Altogether, the enlarged canteen with its “wavelike” north facade, will provide space for 240 people. In the future the renovated kitchen of the canteen will cater for B. Brauns other Melsungen plants. In addition to the internal dining areas, a patio was constructed for use in good weather. The new extension ingratiate itself to the existing building through its architecture and materiality; drawing inspiration from the glass, clinker brick and metal sheeting of its neighbour. During the construction phase the operation of the canteen was maintained. The extension also comprises storage and refrigeration areas. The basement provides space for storage, refrigeration of aliments, heating, ventilation and air conditioning, as well as sanitary facilities. On the ground floor two offices two offices are situated next to the kitchen, servery, refectory and scullery. The gallery-like upper floor provides an entrance to the canteen, an area for visitors and a shop for B. Braun products. The ventilation system is placed on the upper floor.