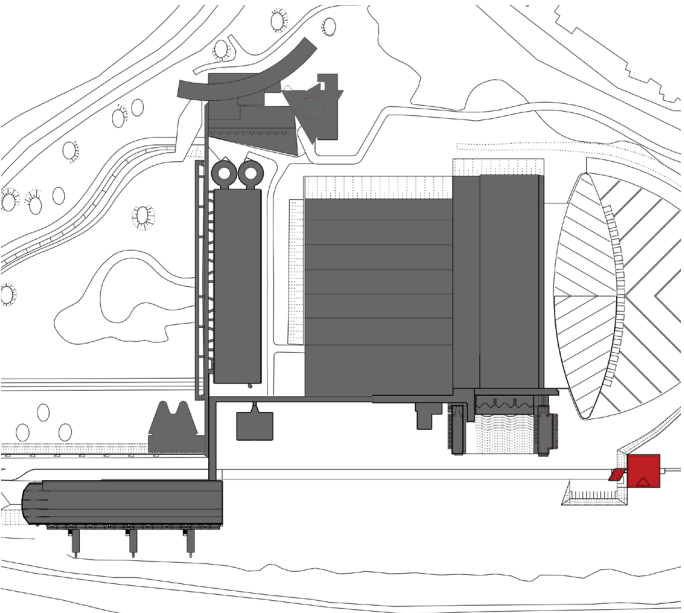
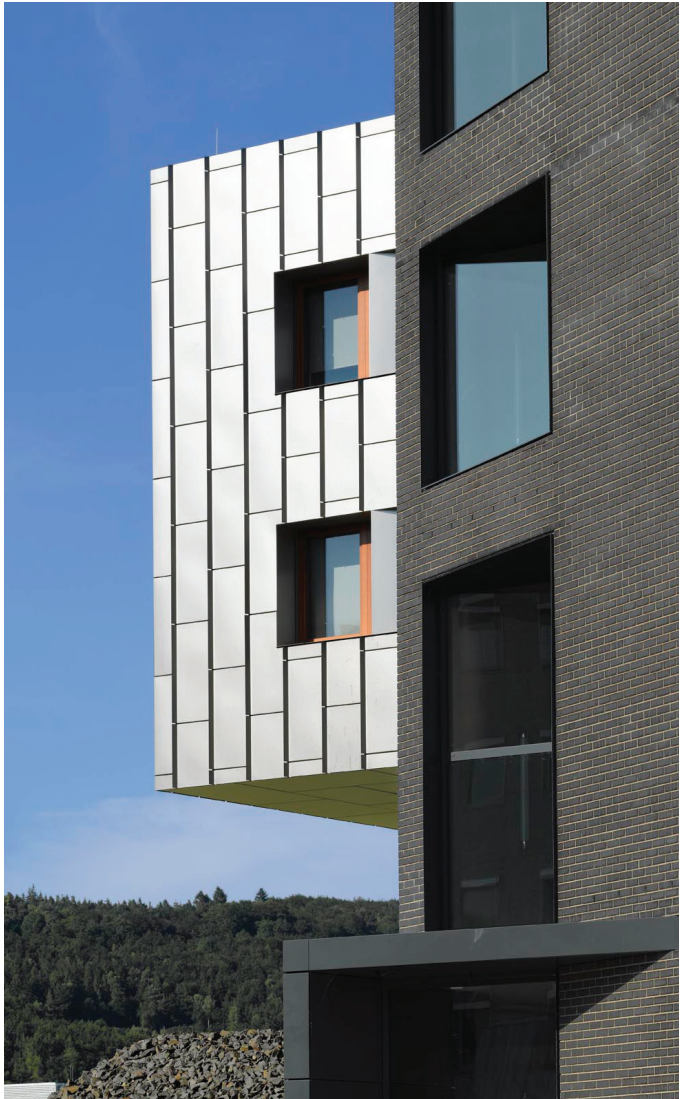


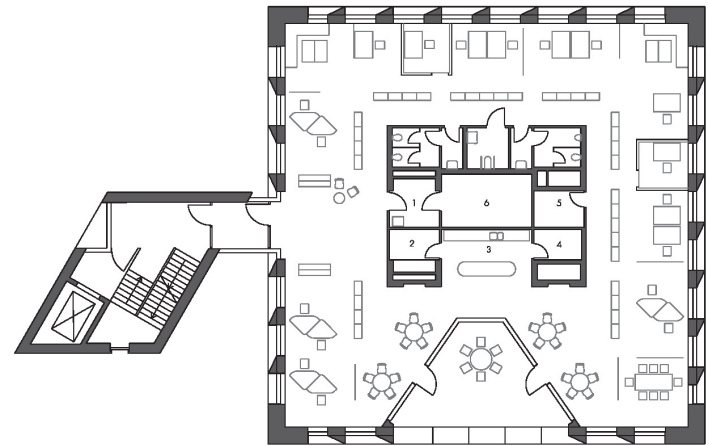
WORKERS COUNCIL FACILITIES
AND HEALTH CLINIC B.BRAUN,
MELSUNGEN

Office and Administration Buildings



Workers Council Facilities and Health Clinic B.Braun,
Melsungen, New Building
Start of Planning 2010 Construction period 2011-2012
Location PfiEFFewiesen, 34212 Melsungen GFA ca. 2.500 m² Scope 1-5,
Parts of 6-8 Client B.Braun Melsungen AG

Ground Plan, 3th floor



Workers Council Facilities and Health Clinic B.Braun

In acknowledgement of staff efforts B.Braun commissioned a new home for the Workers Council and company Doctors. Symbolic of its relative autonomy, the new Workers Council and Health Clinic is deliberately position away from the main B.Braun administration buildings. This new addition to the existing masterplan is situated at the end of the main road which provides access to production, logistics and distribution, storage and administration buildings. The building consists of a series of elements; the base is inserted into the hill above which, at ground floor, a glazed meeting room level provides conference facilities. Sat upon this glazed element is a two story metal box which houses the Health Clinic at first floor and Workers council at second floor. The Clinic is used by the company Doctor to carry out treatment and medical examinations for B.Braun employees. The Workers Council boasts a South facing roof terrace and work areas designed in accordance with the office concept of B.Braun, which promotes the use of open plan offices in combination with high density work place desk sharing. The main entrance and vertical circulation is situated in the brick tower on the East facade.