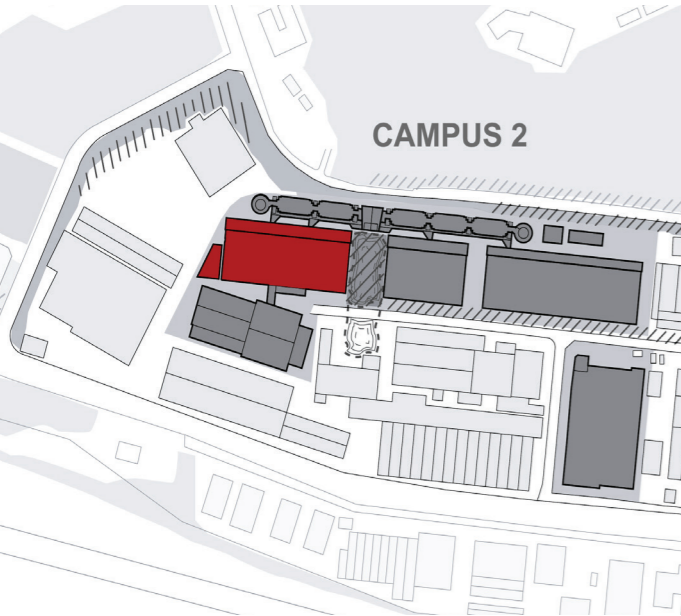
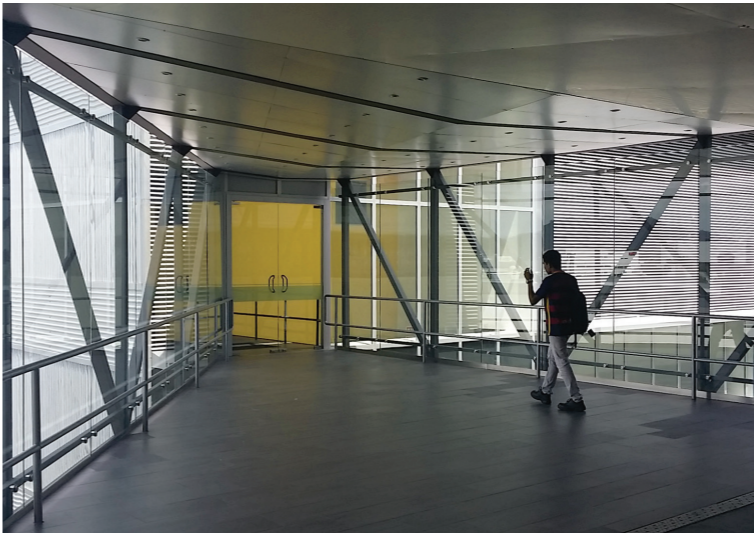
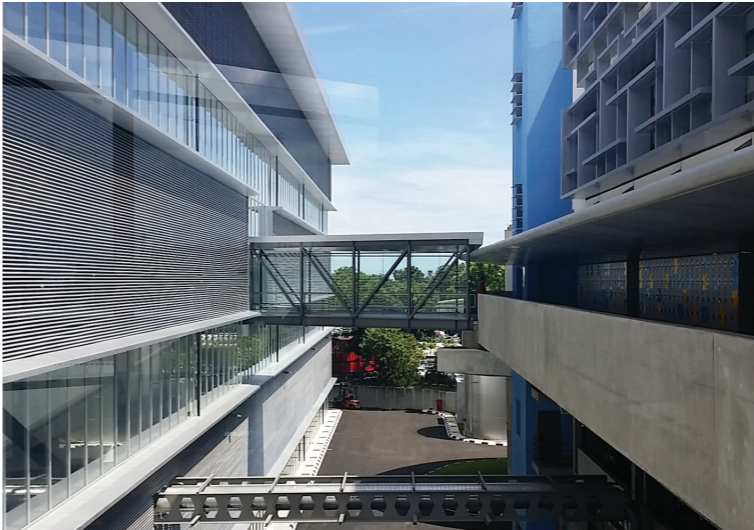


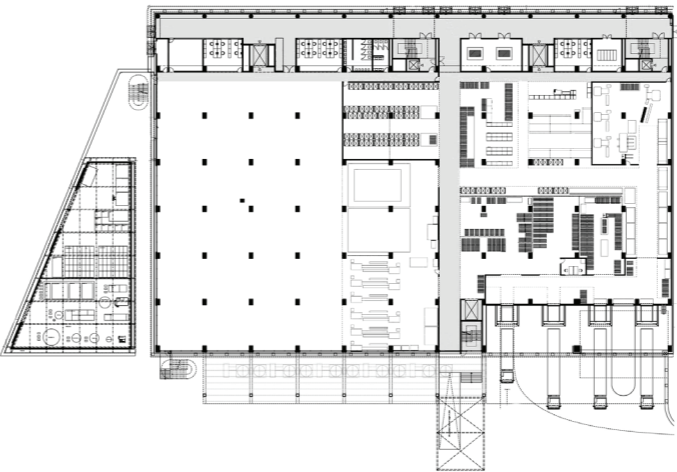
B. BRAUN PRODUCTION
BUILDING B11, PENANG,
MALAYSIA

Industrial



B. Braun Production Building B11, Penang, New Building
Start of Planning 2011 Construction period 2013-2015
Location Bayan Lepas Free Industrial Zone P.O.Box 880, 10810 Penang, Malaysia **GFA** ca. 23.600 m² **Scope** 2-5 **Client** B. Braun Melsungen AG

Ground Plan, ground floor



B. Braun Production Building B11

Building B11 is the newest component of the Masterplan for Campus 2 with a total of 23,600 m². At the end of 2013 the shell construction of the building was completed and the “Roof Truss Ceremony” was celebrated. When the building is finished it will accommodate 1,200 employees working in shifts. Also for the construction of building B11 we used a proven principle for the production area. 16,200 m² over three floors will be used for the production of surgical instruments, scalpel blades and medical instruments of the Aesculap Division of B. Braun. On the ground floor there is a separate incoming and outgoing of goods. This building is located directly next to a six-storey spine with technical equipment, administration and social rooms for the production.