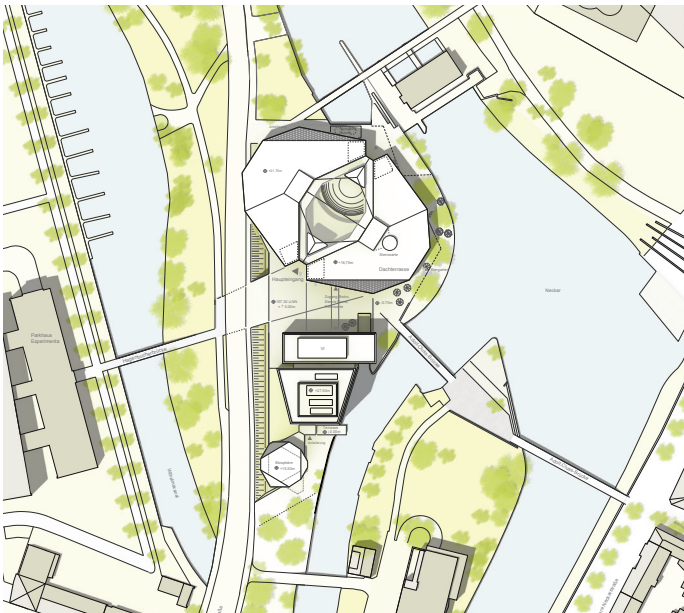
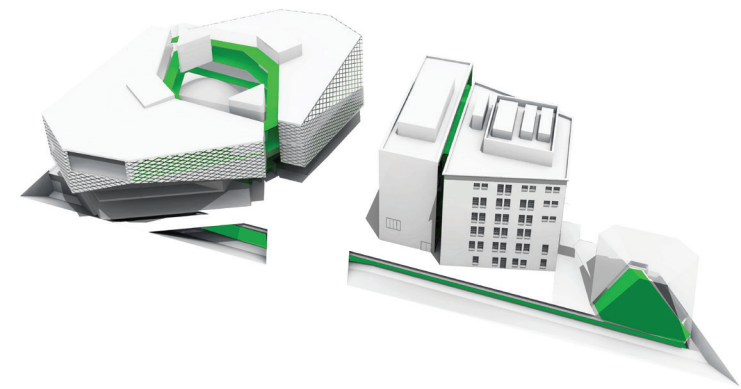
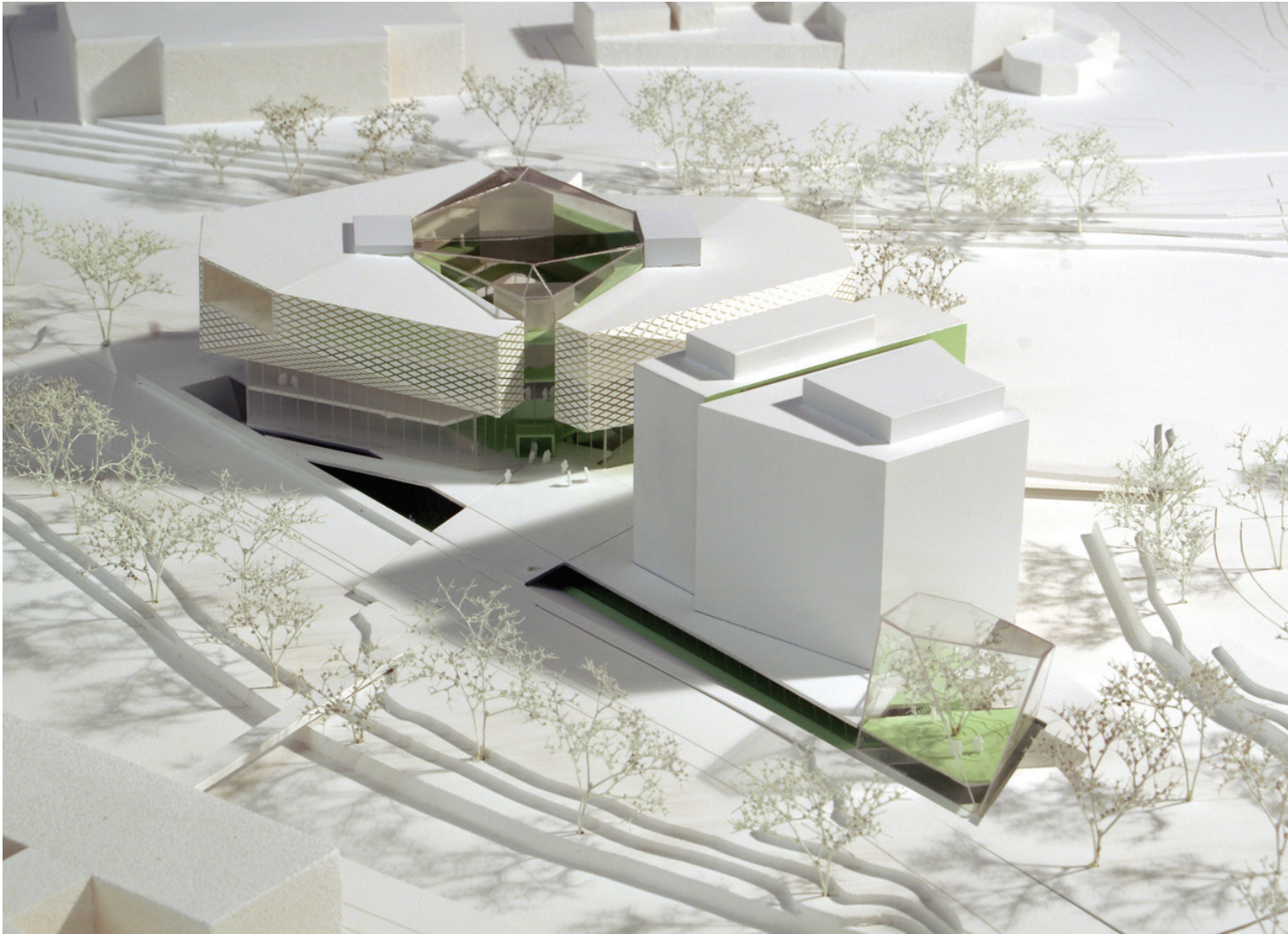


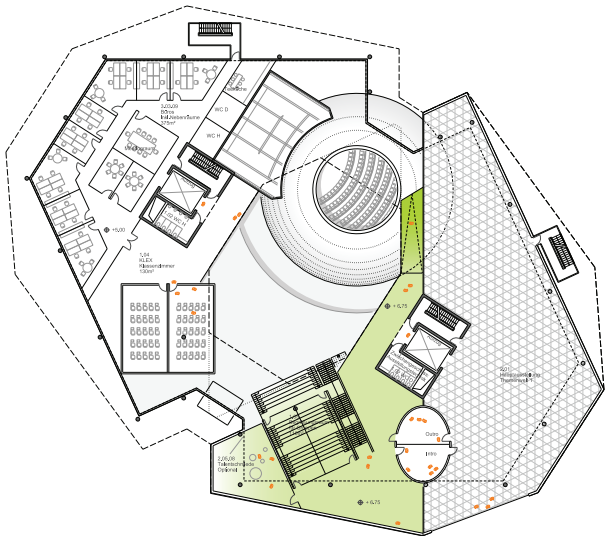
EXPERIMENTA SCIENCE
CENTER EXTENSION,
HEILBRONN

Competition



Experimenta Science Center Extension, Heilbronn, Competition
Competition 2nd Prize 2013 Location Kranenstraße 14, 74072 Heilbronn
GFA ca. 18.000 m²

Ground Plan, 1st floor



Experimenta Science Center Extension

For the extension of the „Experimenta“ science center a new building and a „biosphere“ were designed to complement the existing „Hagenbucher“ building. The two additions provide 18.000 sqm of extra space. The new main building is shaped like a polygonal ellipse and serves as the center point of the ensemble. Its height declines towards the river Neckar’s bank, thereby preserving the views towards the Neckarpark. Concrete, glass and metal were chosen as the main construction materials, emphasising the scientific and innovative approach of the science center. Visitors have the opportunity to take a walk in a closed loop („space time spiral“) and explore all of the attractions. The loop’s turning point is marked by the biosphere building on the southern end of the site. The biosphere with its test lab is a detailed model of our ecosystem. In addition to the science exhibitions there will be several restaurants on site. Because of its location on Heilbronn’s Neckar Island the ensemble is defined by the Island’s narrow spatial capacity. While the design utilizes the available space very efficiently, it also maximises the distance to the „Hagenbucher“ building. This creates an open area and prevents a disproportionate building density.